

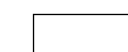

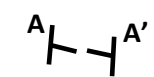


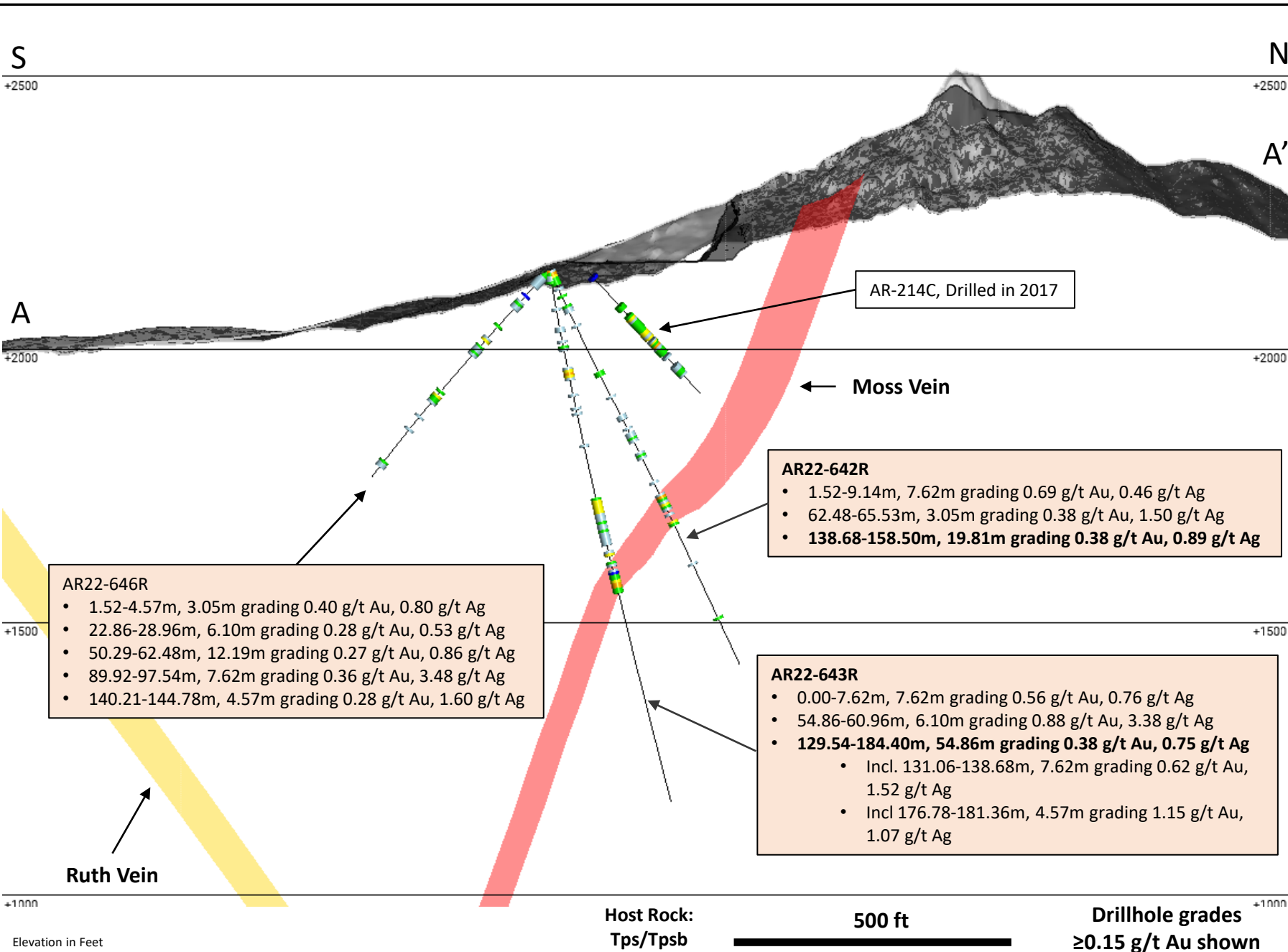
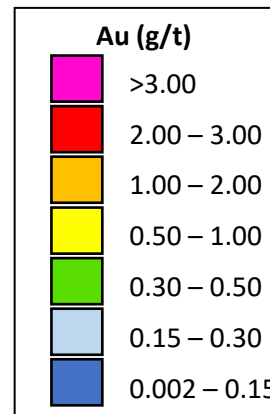
Figure 3

Cross Section: Mordor/West Pit Extension

- Looking West
- 200' section width
- Near surface ore grade material
- Potential to extend the West pit to the west

Legend

-  Pre-Mine Topography
-  March 5, 2023, Topography
-  Previously reported interval
-  Interval reported in this News Release
-  Section Line shown on Figure x



AR22-646R

- 1.52-4.57m, 3.05m grading 0.40 g/t Au, 0.80 g/t Ag
- 22.86-28.96m, 6.10m grading 0.28 g/t Au, 0.53 g/t Ag
- 50.29-62.48m, 12.19m grading 0.27 g/t Au, 0.86 g/t Ag
- 89.92-97.54m, 7.62m grading 0.36 g/t Au, 3.48 g/t Ag
- 140.21-144.78m, 4.57m grading 0.28 g/t Au, 1.60 g/t Ag

AR22-642R

- 1.52-9.14m, 7.62m grading 0.69 g/t Au, 0.46 g/t Ag
- 62.48-65.53m, 3.05m grading 0.38 g/t Au, 1.50 g/t Ag
- **138.68-158.50m, 19.81m grading 0.38 g/t Au, 0.89 g/t Ag**

AR22-643R

- 0.00-7.62m, 7.62m grading 0.56 g/t Au, 0.76 g/t Ag
- 54.86-60.96m, 6.10m grading 0.88 g/t Au, 3.38 g/t Ag
- **129.54-184.40m, 54.86m grading 0.38 g/t Au, 0.75 g/t Ag**
 - Incl. 131.06-138.68m, 7.62m grading 0.62 g/t Au, 1.52 g/t Ag
 - Incl. 176.78-181.36m, 4.57m grading 1.15 g/t Au, 1.07 g/t Ag

AR-214C, Drilled in 2017

← Moss Vein

Ruth Vein

S

N

A

A'

Elevation in Feet